

THACS

TEWIN HORTICULTURAL ARTS & CRAFTS SOCIETY

NEWSLETTER APRIL 2010

Chairman's Introduction

As mentioned at the AGM on Monday 18th January 2010, the results from the *THACS Newsletter Reader Survey* showed that the newsletter is well-regarded and basically sound but there is scope for improving its content and appearance. We are now starting on those improvements and you will no doubt notice some of the changes in this issue of the newsletter.

The Children's Corner and Jokes were not very popular, so we have discontinued publishing them. However, you told us that you like reading the Gardening Tips, Recipes and Photography Tips, so we will continue to publish them. There are some gardening tips and a recipe in this newsletter and we hope to have some photography tips next time. We'd also love to include tips from you so please send them to me. We will publish a selection of them, so that all of our members will be able to benefit from your experience and advice.

We would also like to include reader's letters so do please send me your comments and opinions about any *THACS*-related issue. You can email them to me at ray@raykepler.wanadoo.co.uk.

Ray Keppler (Chairman).

THACS Spring Show on Saturday 20th March 2010

The Spring Equinox, when day and night are at equal lengths, happened to fall on 20th March this year, suitably on the day of the *THACS* Spring Show, although, due to the dismal weather, it did not seem like it. However, nothing could dampen the enthusiasm and determination of our members to make the show a success, and despite having tolerated one of the worst winters and late springs for many years, the gardeners of the society managed to display daffodils and other spring flowers, as well as shrubs and indoor plants.

The Arts and Crafts, Photography and Culinary classes were also very well supported, with displays of calligraphy, illustrations, handmade ornaments, cards, needlework and poetry, and the Culinary class included delicious preserves, cakes, scones and quiches (which all smelled wonderful), pavlovas, fudge and cookies. Over 50 photographs were displayed covering five different subjects. 51 exhibitors took part in the show, with a total of 226 entries, which was a marvellous effort.

We are fortunate to have three new trophies this year for the Spring Show: one for Flower Arranging, and the others for adult's and children's photography. In the past, Flower Arranging has been combined with the Horticulture Class, and the points for the Photography have been added to the Autumn Show points for an overall annual winner, but now we have a trophy for both shows in all these classes. The Welwyn & Hatfield Times tankard for Flower Arranging was won by Susan Whitbourn; the Van Hage Cup for Horticulture was awarded to Patricia Fulford; the Tewin Society Salver went to Emma Pitrakou for Arts & Crafts, while the Peter Allen Memorial Cup for Photography was won by Jules Bridgman. The highest points for the Culinary Class were achieved by Debbie Mills, who won the Nodder Bowl.

The headmistress of Tewin Cowper School, Alison Simpson, was on hand to award the school cup for the highest points in the Children's Class, which was jointly won by Lauren Cates and Rosie Christian-Cox. Some of the schoolchildren had made two lovely collages for *THACS*, and these decorated the corridor of the Memorial hall. The Les Borg Cup for Children's Photography was won by Christie Lockyer-Webb. The full list of winners is at the end of this report.

Visitors to the show in the afternoon enjoyed tea or coffee and homemade cakes, and after the presentation at the end of the afternoon, some of the exhibits were auctioned. Thanks to all who contributed to making the show a success, whether by entering the classes, or by helping behind the scenes in so many ways. It all made for a very happy village event.

CATBELLS

TEWIN WOOD

Quality in Tourism
Four Star

BED & BREAKFAST

*Private apartment in a
woodland garden*

With ample parking for 4 cars

Telephone / Fax: 01438 798412

<i>Special Awards for Highest Points</i>	<i>Winners</i>
Flower Arranging: Welwyn Times Trophy	Susan Whitbourn
Horticulture: Van Hage Cup	Pat Fulford
Arts & Crafts: Tewin Society Salver	Emma Pitrakou
Photography: Peter Allen Memorial Cup	Jules Bridgman
Culinary: Nodder Bowl	Debbie Mills
Tewin Cowper School Children's Award	Lauren Cates and Rosie Christian-Cox
Children's Photography: Les Borg Cup	Christie Lockyer-Webb

<i>Other Prizes</i>	<i>First</i>	<i>Second</i>	<i>Third</i>
Flower Arranging	Susan Whitbourn	Anna Clark and Joy Lawson	
Horticulture	Pat Fulford	Anna Clark	Elizabeth Wilson
Arts & Crafts	Emma Pitrakou	Gay Cates	Peter Oakenfull, Linda Williams, Diana Whitehead, Shirley Ashby, Tricia Lyons and Diana Brannen
Photography	Jules Bridgman	Paul Carter and Alf Fulford	
Culinary	Debbie Mills	Hilary Tipping and Roe Hill	

<i>Children's Awards</i>	<i>First</i>	<i>Second</i>	<i>Third</i>
Horticulture			
2 - 4 years	Imogen Kerr		
5 - 7 years	Lauren Cates		
8 – 11 years	Rosie Christian-Cox	Isabelle Kerr	
12 – 17 years	<i>No entries</i>		
Arts & Crafts			
2 - 4 years	Scarlett Christian-Cox	Imogen Kerr	
5 - 7 years	Lauren Cates		
8 – 11 years	Rosie Christian-Cox	Isabelle Kerr	Natasha Kerr
12 – 17 years	<i>No entries</i>		
Photography			
12 – 17 years	Christie Lockyer-Webb	Keir Lockyer-Webb	
Culinary			
2 - 4 years	Scarlett Christian-Cox		
5 - 7 years	Tyler Owens	Lauren Cates	
8 – 11 years	Georgia Owens	Rosie Christian-Cox	Joshua Simons Chadwick
12 – 17 years	<i>No entries</i>		

As you can see, there were not very many children's entries this Spring, and some categories only had one entry per age group. This is despite one of our committee members visiting the school to raise pupil interest, with the help of Alison Simpson, the headmistress, who sent letters home with the children. The 12-17 year age group was not represented at all except for the Photography Class, which is disappointing. If you know parents with children of any age group, please ask them to encourage their children to take part in the shows – it gives the children a sense of achievement, there are lots of prizes to be won, and it is good fun too!

Forthcoming Events

Open Gardens between 11:00 and 18:00 on Saturday & Sunday 15-16 May 2010

Thirteen local gardens will be open for *THACS* over the weekend of 15-16 May. These Open Gardens are a mixture of previously-opened gardens and ones that are opening for the first time. They represent a great diversity in location, size and style. There are enough Open Gardens to make up two full days out and enough variety to give you plenty to see. We hope that you will come along and enjoy this wonderful opportunity to see a wide variety of interesting gardens.



Each garden will be open for one day from 11:00 to 18:00 but there will be different gardens open each day, so you will not have too many to visit in one day. Gardens in the south part of Tewin, Digswell and Tewin Water will be open on Saturday 15th May, whilst those in the north part of Tewin will be open on Sunday 16th May. Refreshments and plant sales will be available at some of the gardens.

Programmes are £2 per adult (accompanied children free) and contain the addresses of each of the open gardens, together with a map showing their location. These programmes act as your entry tickets, giving you entry to all of the gardens. They will be on sale at Tewin Stores and Tebbutts from Monday 26th April.

If you wish to purchase tickets during the Open Gardens weekend, you'll be able to buy them at the two stores and one of the open gardens, as follows.

	Tewin Stores	Tebbutts	Open Garden
Saturday 15th May	8:30 to 12:30	7:00 to 18:00	Digswell Water House, Digswell Lane 11:00 to 18:00
Sunday 16th May	9:00 to 12:00	9:00 to 12:00	Dawley Cottage, 58 Orchard Road, Tewin 11:00 to 18:00

Visit to Beth Chatto Gardens on Wednesday 23rd June 2010

THACS has arranged for a visit by coach to the renowned Beth Chatto Gardens, which are near to Colchester, Essex. These gardens began in 1960, so this is the year of their 50th anniversary. From an overgrown wasteland with poor gravel and boggy hollows, it has been transformed into an informal garden harmonising with the surrounding countryside. The gardens are divided into three different areas:- gravel garden, water garden and woodland garden. There is also a tea room and an extensive nursery with over 2,000 plants classified according to their growing conditions. If you have a problem area in your garden, then this is the ideal place to go to discover how to deal with it. You can find out more about these gardens from the web site www.bethchatto.co.uk.

The visit includes an optional one-hour guided tour for £2, which should be particularly useful to you if this is your first visit to the gardens.

The prices for this visit are as follows.

Prices	Visit only	Visit + tour
THACS members	£15.50	£17.50
Non-members	£17.50	£19.50

The coach will leave Tewin (from the bus stop opposite the Rose & Crown) at 9.00am, so please be there for 8.45am to ensure that the coach can leave on time. It will leave the gardens for the return at 3.00 pm and we hope to arrive back in Tewin by 5:30pm. Our allocated slot time for the tour is from 12:00pm to 1:00 pm, so there will be plenty of spare time to explore the gardens more fully after the tour.

If you wish to come, please fill in the form on the back page of this newsletter and send it, with your payment (cheques payable to *THACS*), to **Pat Fulford, 27 Bishops Road, Tewin Wood, AL6 0NP by Friday 11th June 2010.**

***THACS* plant stall at the village fete on Saturday 26th June 2010**

THACS will again be managing the plant stall and will be grateful for any plants that members can spare to sell on the day in aid of the Tewin Memorial Hall. Unwanted seedlings, rooted cuttings and divided perennials will all be welcome. Please label and deliver to the stall on Lower Green in the morning from 11am. Alternatively you may leave with either Kate Stott at 20 Harwood Close (01438717680) or Sue Whitbourn (01438798221) at 107 Burnham Green Road by Friday 25th June.

***THACS* 10th Anniversary Events on Saturday 23rd October 2010**

To celebrate the 10th anniversary of the founding of *THACS* in October 2000, we are going to hold two events on Saturday 23rd October this year. From 10.00am to 4.00pm, there will be an Arts & Crafts Fair in the Memorial Hall, and in the evening from 7.30pm, we will be inviting

you all to join in our celebrations by having a 'pot-party', also in the Memorial Hall, as we did at our first get-together ten years ago.

There will be more information nearer the time, but we wished you all to know now, so that you can make a note of the date in your diaries.



Bedwell



GARDEN MACHINERY
Lawn & Garden Machinery Specialist

Bramfield Road, **Bramfield** Telephone: **01992 500290**

also at Van Hage Garden Co, Ware Telephone: 01920 871651

New and Used Lawn Mowers
Service – Spares – Accessories – Hand Tools

Visit our Showrooms with Free Parking on site

Authorised Dealers for all Top Brands with Specialist Advice and Service

STIHL – **WOLF*Garten** – **HONDA** – **HAYTER**

COUNTAX – **ATCO** – **BOSCH**

Recent Events

Visit to the Royal Academy of Arts to see *The Real Van Gogh: The Artist and His Letters* on Wednesday 31st March 2010

The coach trip to see the *Real Van Gogh* exhibition at the Royal Academy was shared by 37 people, both members and their relations and friends. We were fortunate to have been able to book in advance, thanks to the efforts of our Treasurer, Pat Fulford, who organised the trip very thoroughly, but, unfortunately, was not able to join the party at the last minute.

The number of people queuing outside the Academy all day was an indication that the exhibition would be crowded, but nevertheless it was not difficult to see the works, and the letters that Van Gogh had written to his brother, Theo, were well displayed in the centre of the galleries, with plenty of room around them. There were many works that had not been exhibited here before, including some beautiful drawings using reed and quill pens.

Both the letters and his sublime work show that although obviously depressed at times, Van Gogh was lucid to the end of his life. Portraits, still lifes and landscapes formed most of his work, but it was portraiture that was most important to him. His early works of peasants and peasant life were fascinating, and when he discovered colour, especially contrasting colours, and

the use of small brushstrokes to create movement throughout his paintings, his style became the creative force that we know and love today.

The outing was enjoyed by all, Chambers coaches provided comfortable and prompt transport once again, and we were pleased to experience such an excellent exhibition.

Gardening Tips

After such a long winter and late spring the garden needs a good sort-out, tidy and boost.

Lawns

Lawns need cutting, edges tidying and a moss killer, weed and feed applied which will encourage your lawn to look wonderful this summer. When cutting, set the mower higher than usual for the first cuts to prevent the lawn being scraped.

Bulbs

Colour has come back to the garden with the beautiful spring bulbs and blossom of trees and spring flowering shrubs. Mulch around plants as they will be hungry after winter, and keep weed seedlings hoed. When bulbs have finished flowering, dead head them, but leave stalks and leaves to die back naturally, as this takes goodness back to the bulbs. A general purpose feed at this stage is good for the bulbs and they will produce better flowers next year. Slugs and snails are a pest while the leaves die down, hiding under the foliage, so apply a slug bait that is safe for wildlife.

Seeds

Get busy with seed planting both in the greenhouse and outside when possible. As it has been so cold, it is not a problem if you have been reluctant to start planting seeds, as, if they had got too far ahead in a heated greenhouse, they would have become long and lanky before they could have been hardened off and planted outside. Now that it is warmer, they will soon catch up and longer days will help them to grow strongly.

So remember to look after your *lawns*, take care of your *bulbs* and *get sowing!*

Recipe

Rhubarb and Ginger Crumble

Ingredients

2 1/4 lbs rhubarb, trimmed and sliced into large chunks (about 7 1/2 cups)
2/3 cup brown sugar
Juice and zest of 1 orange
1 cup flour
1/2 cup cold butter
1/2 cup rolled oats
2 pieces fresh ginger, peeled and chopped

Method

Preheat your oven to 180°C/350°F. Put the rhubarb and half the sugar into a pan. Add the orange juice and zest, put a lid on top, bring to the boil and simmer for a few minutes. Remove the lid and simmer for around 5 more minutes, until the rhubarb has softened slightly. Spoon into an ovenproof baking dish or individual dishes and spread out evenly across the bottom.

To make your crumble topping, use your fingers to lightly rub together the flour and butter until the mixture resembles fine bread crumbs. Stir in the oats, the rest of the sugar and the ginger. Sprinkle the crumble over the rhubarb and bake in the preheated oven for 40 to 45 minutes or until the rhubarb is bubbling up and crumble is golden.

ATTIMORE VETERINARY PRACTICE

WOOLMER GREEN

TEL: 01438 815515

22a London Road, Knebworth SG3 6JP

Local convenient clinic with consultations by appointment, friendly and qualified staff, good parking and all the benefits of our 24 hour Hospital at Welwyn Garden City, should the need arise. (Telephone: 01707 331963).

We also sell a wide range of food and accessories.

The branch is open Monday to Saturday and provides complete health care plans for all ages.

We look forward to seeing you and your pet soon.

ATTIMORE
VETERINARY
GROUP



HOSPITAL

Ridgeway

Welwyn Garden City AL7 2AD

Tel: 01707 331963

Fax: 01707 393970

22 The Common

Hatfield AL10 0ND

Tel: 01707 267597

10 Mutton Lane

Potters Bar EN6 2PA

Tel: 01707 664011

4 Castle Rise

Wheathampstead AL4 8HX

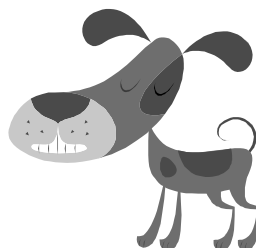
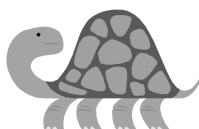
Tel: 01582 766669

22A London Road

Woolmer Green

Knebworth SG3 6JP

Tel: 01438 815515



ADVERTISEMENTS

Please support the advertisers and be sure to mention **THACS** and that you saw their adverts in our Newsletter or Show Schedule when purchasing items or services.

NEWSLETTER EDITOR

Ray Keppler Email: ray@raykeppler.wanadoo.co.uk Telephone: 01438 717545

**Visit to the Beth Chatto Gardens
on Wednesday 23rd June 2010**

Name/s

Address.....

.....

Phone Number.....

Number of tickets required for THACS members?.....

Number of tickets required for non-THACS members?.....

Number of tickets required for the guided tour?.....

Prices	Visit only	Visit + tour
THACS members	£15.50	£17.50
Non-members	£17.50	£19.50

I enclose £.....

Please make cheques payable to *THACS* and send to:- Pat Fulford, 27 Bishops Road,
Tewin, Herts AL6 ONP by Friday 11th June 2010

C.E.Wilkinson Tree Surgery & Services

Established 1998

Specializing in All Aspects of Treework & Stump Grinding

- Tree Felling - Topping & Pruning (All Treework to BS 3998)
- Specialists in Stump Grinding
- Hedge Cutting & Removal
- All Wood and Debris Removed from Site
- Specialists in Conifers
- Fully Insured and Qualified
- Contract Work Undertaken

47 School Lane, Welwyn, Herts.

For Free Estimates and Advice Telephone : 01438 718481

Mobile : 07850 110868

